

District Offices

Coordination Berlin

info@revierwende.de
Phone: +49 1578 5322030

RHINE/RUHR AREA

Revierbüro Bedburg

Adolf-Silverberg-Str. 17, 50181 Bedburg
bedburg@revierwende.de
Phone: +49 1578 5322027

LAUSITZ AREA

Revierbüro Cottbus

Ostrower Str. 6, 03046 Cottbus
lausitz@revierwende.de
Phone: +49 1578 5322035

Revierbüro Görlitz

Bautzener Str. 57, 02826 Görlitz
lausitz@revierwende.de
Phone: +49 1578 5322033

CENTRAL GERMAN AREA

Revierbüro Halle

Röpziger Str. 19, 06110 Halle (Saale)
halle@revierwende.de
Phone: +49 1578 5322024

Revierbüro Pegau

Kirchplatz 3, 04523 Pegau
pegau@revierwende.de
Phone: +49 1578 5322031

SAARLAND AREA

Revierbüro Saarbrücken

Schlesienring 2, 66121 Saarbrücken
saarbruecken@revierwende.de
Phone: +49 1590 4347713

 revierwende.de

 twitter.com/revierwende

 facebook.com/Revierwende

 instagram.com/revierwende

Our District Offices at a Glance




REVIERWENDE
TRADE UNIONS SHAPE TRANSITION.
A PROJECT OF GFAAJ
Non-profit society of the German Trade Union Confederation
for the promotion of workers and young people mbH

Supported by:

Federal Ministry
for Economic Affairs
and Climate Action
on the basis of a decision
by the German Bundestag

REVIERWENDE

TRADE UNIONS SHAPE TRANSITION.
UNITED AND FAIR.

**Trade union initiatives
for the just transition in
the coal-mining areas.**



Who We Are



To ensure the just and equitable phasing out of coal as a source of energy is a tremendous challenge that can only succeed if people living in the coal-mining areas are fully involved. Our nationwide project “Revierwende” seeks to support employees, young people who are training to become skilled workers of the future, works and staff councils, trade union members and residents throughout structural change, and ensure that the employees’ perspective is taken into consideration as coal is phased out.

What kind of new and promising jobs can be created as coal is phased out? How can we ensure that these jobs continue to meet the trade union requirements of ‘good work’? How can the energy transition become opportunities for the effected regions and contribute to the equality of living conditions? How can we achieve a common understanding about the implementation of the energy transition? We want to work on all these questions at our newly established district offices alongside those who live in the coal-mining areas.

“Revierwende” is a project initiated by the German Trade Union Confederation (DGB) and is implemented by the DGB’s non-profit organisation for the promotion of workers and youth (GFAAJ mbH).

Our Goals

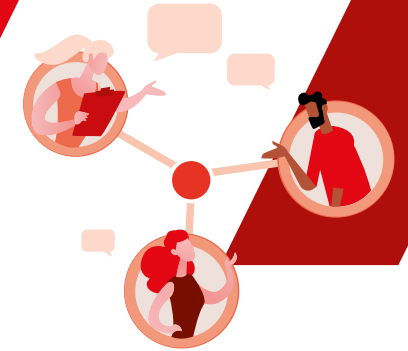


The Commission “Growth, Structural Change and Employment” (KWSB) has formulated the goal of organising the coal phase-out according to social and ecological criteria in a broad socially supported compromise. We want to contribute to this goal, and

- promote a common understanding among people about a sustainable future for the coalfields in order to develop internationally visible model regions
- strengthen social cohesion and equal living conditions through ‘good work’
- support economic impulses and innovations for the coal-mining areas
- strengthen cultural identity
- promote active, participation-oriented structural development from within the region
- involve employees as ‘experts of change’ in the economic restructuring process



Our Offer



We want to be the first point of contact regarding questions of structural change, providing advice and training, and proactively shaping change through networking and being a multiplier on the ground. Primarily, we will be putting forward ideas and suggestions made by people living in the coal regions. We are available to all those workers who wish to become involved in the socio-ecological shaping of change, whether they are trade union members or not, and whether or not they come from companies with or without a works council.

We offer the following services in our district offices:

Knowledge Transfer and Networking

- events on structural design and innovation
- exchange and networking meetings with regional players by building local networks and innovation workshops
- publications and public relations about structural development, media coverage, and examples of best practices from the precincts
- exchange of information across regions and countries

Counselling and Qualification

- counselling employees, especially young skilled workers on site, trade unionists, as well as company interest groups on the basics of structural change, regional and structural policy and content/technical know-how